

# HARBOR CHASE AT WELLINGTON CROSSING REPLAT, M.U.P.D.

BEING A REPLAT OF TRACT "A" AND WATER MANAGEMENT TRACT 1, HARBOR CHASE AT WELLINGTON CROSSING, P.U.D., AS RECORDED IN PLAT BOOK 122, PAGES 18 AND 19, PUBLIC RECORDS OF PALM BEACH COUNTY, FLORIDA, LYING IN SECTION 29, TOWNSHIP 44 SOUTH, RANGE 42 EAST, PALM BEACH COUNTY, FLORIDA

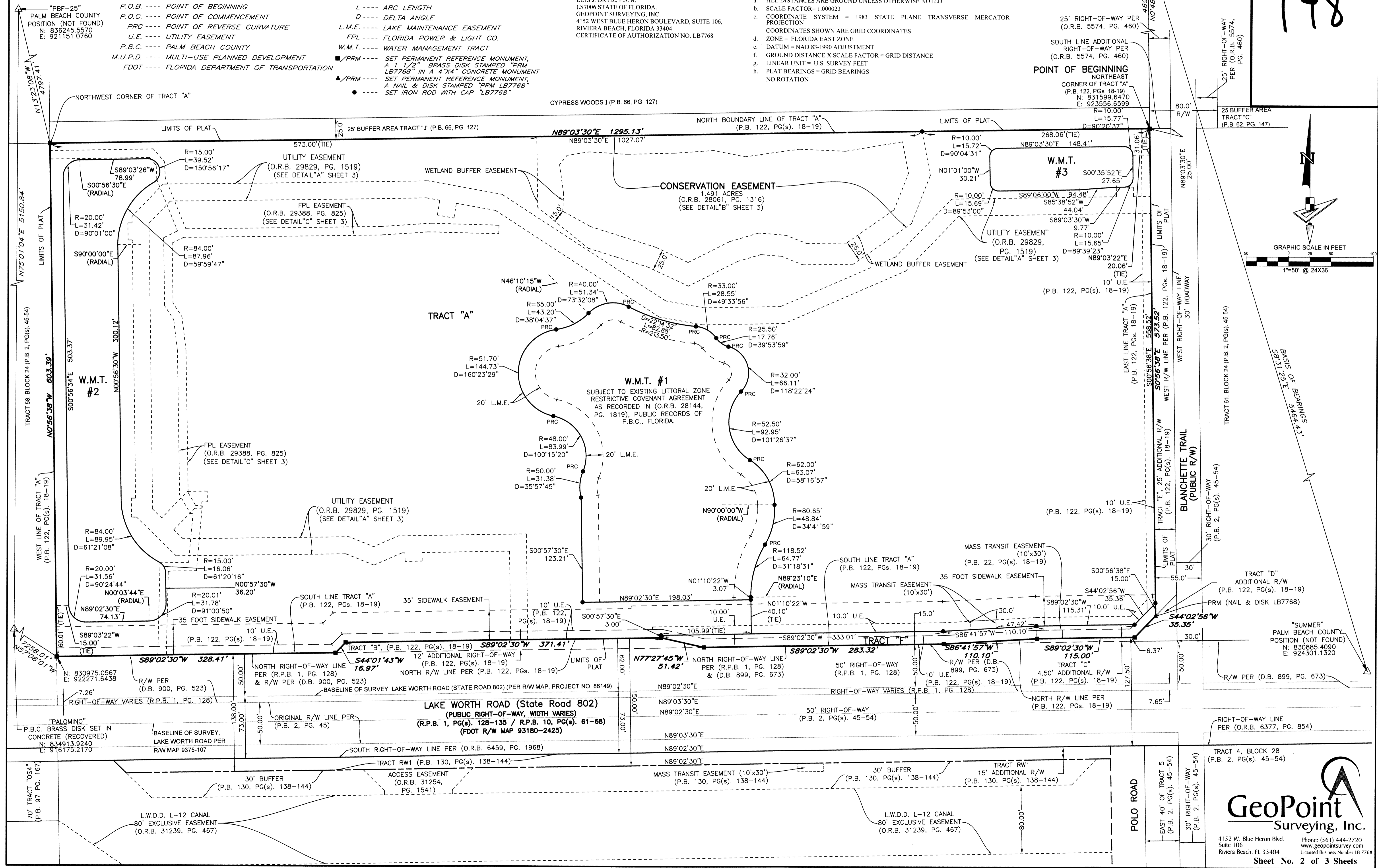
### LEGEND

- P.B. ---- PLAT BOOK
- PG./PG(s) ---- PAGE/PAGES
- R.P.B. ---- ROAD PLAT BOOK
- O.R./O.R.B. ---- OFFICIAL RECORDS BOOK
- D.B. ---- DEED BOOK
- P.O.B. ---- POINT OF BEGINNING
- P.O.C. ---- POINT OF COMMENCEMENT
- PRC ---- POINT OF REVERSE CURVATURE
- U.E. ---- UTILITY EASEMENT
- P.B.C. ---- PALM BEACH COUNTY
- M.U.P.D. ---- MULTI-USE PLANNED DEVELOPMENT
- FDOT ---- FLORIDA DEPARTMENT OF TRANSPORTATION
- (G) ---- GRID DISTANCE
- (S) ---- GROUND DISTANCE
- R/W ---- RIGHT-OF-WAY
- CL ---- CENTER LINE OF ROAD
- R ---- RADIUS
- L ---- ARC LENGTH
- D ---- DELTA ANGLE
- L.M.E. ---- LAKE MAINTENANCE EASEMENT
- FPL ---- FLORIDA POWER & LIGHT CO.
- W.M.T. ---- WATER MANAGEMENT TRACT
- /PRM ---- SET PERMANENT REFERENCE MONUMENT, A 1 1/2" BRASS DISK STAMPED "PRM LB7768" IN A 4"x4" CONCRETE MONUMENT
- ▲/PRM ---- SET PERMANENT REFERENCE MONUMENT, A NAIL & DISK STAMPED "PRM LB7768"
- ---- SET IRON ROD WITH CAP "LB7768"

THIS INSTRUMENT WAS PREPARED BY  
 LUIS J. ORTIZ, P.S.M.  
 LS7006 STATE OF FLORIDA  
 GEOPoint SURVEYING, INC.  
 4152 WEST BLUE HERON BOULEVARD, SUITE 106  
 RIVIERA BEACH, FLORIDA 33404  
 CERTIFICATE OF AUTHORIZATION NO. LB7768

STATE PLANE COORDINATE NOTES:  
 a. ALL DISTANCES ARE GROUND UNLESS OTHERWISE NOTED  
 b. SCALE FACTOR=1.000023  
 c. COORDINATE SYSTEM = 1983 STATE PLANE TRANSVERSE MERCATOR PROJECTION  
 COORDINATES SHOWN ARE GRID COORDINATES  
 d. ZONE = FLORIDA EAST ZONE  
 e. DATUM = NAD 83-1990 ADJUSTMENT  
 f. GROUND DISTANCE X SCALE FACTOR = GRID DISTANCE  
 g. LINEAR UNIT = U.S. SURVEY FEET  
 h. PLAT BEARINGS = GRID BEARINGS  
 NO ROTATION

# 148



**GeoPoint**  
 Surveying, Inc.

4152 W. Blue Heron Blvd.  
 Suite 106  
 Riviera Beach, FL 33404

Phone: (561) 444-2720  
 www.geopointsurvey.com  
 Licensed Business Number LB 7768

Sheet No. 2 of 3 Sheets